

# 2020 VISION

STEPPING OUT IN FAITH TO REACH THE NEXT GENERATION

**PHASE 02**

# PHASE 01 ✓ Done!

- 1 Move TLC and TLCS kids from portables and gym to permanent classrooms in new building
- 2 New children's building allows space for jr high & high school to move into the gym
- 3 TLCS kindergarten classes move to new building and CEC gains 3 classrooms

Future Home  
of Kraft Chapel

■ REPURPOSED BUILDINGS  
■ PROPOSED BUILDINGS

## PHASE 02

- 4 College ministry moves from garage into a building much better suited to minister to Cabrillo College
- 5 With youth in their new spaces and Venue in the new college ministry center, Monschke Hall is freed up for adult classes

# ◀ OUR 2020 VISION

It's about the next generation: We seek to provide the best ministry space possible for children, youth, and college students by the year 2020! With Phase 1 complete, we now focus on Phase 2: Our college and young adult community, and our camp!

## Phase 2 includes:

- NEW College Center/Coffeehouse
- Upgrades to Camp Hammer
- Compassion Projects



• 1947 New 7th Ave. auditorium



• 1891 First building on 7th Ave



• 1973 Aptos campus opens

## 2020VISION PHASE 1



2016 New TLC children's building opens



New Indian school and clinic opens

## 2020VISION PHASE 2 begins

2020

# GENERATIONAL IMPACT

---

## **GREAT NEED**

There is a critical need for outreach to college students and young adults right now. The Barna Research Group reports “61% of today’s young adults had been churched at some point but are now spiritually disengaged.”\*

## **GREAT POTENTIAL**

The energy and innovation of young adults will be developed—but by whom and toward what end? Decisions impacting all of life are made during college years—but according to whose values? This generation needs to know the life-giving gospel of Jesus Christ.

## **GREAT OPPORTUNITY**

- TLC is the only church in our county with property right next to a college.
- Hundreds of the 14,000 Cabrillo students are in our parking lot daily, waiting between classes.
- Imagine a ministry center just steps from the Cabrillo campus with room for these students, including a café and space for Bible studies and concerts!
- Our college & young adult gathering, The Hub, tripled in two years. Momentum is building!

***One of our biggest mission fields... is right next door.***

\*[Barna Update, “Most Twentysomethings Put Christianity on the Shelf Following Spiritually Active Teen Years,” The Barna Group, September 16, 2006]



“Many college students here in Santa Cruz have Christian upbringings but are hesitant about church involvement now. However, they are still in search of something greater than themselves. By creating this space, TLC meets the needs of Cabrillo students and gets to shine like a city on a hill (Matt. 5:14).

This will be a great place for church members to meet for Bible studies, discipleship, and just life.”


*—Tryston Cruz*



“Coming to church can be intimidating for someone who’s never been before, but visiting a coffee shop isn’t very intimidating. College students and young adults spend many nights every week in coffee shops, so why not make the ‘go to’ coffee shop be on the church campus. Plus, the new meeting space provides room for young adult ministries to grow!”

*Zack and Mikala Shull*



A young woman with long, dark, wavy hair is smiling and looking towards the camera. She is wearing a white shirt with dark horizontal stripes. The background is a soft-focus green, suggesting an outdoor setting with trees or bushes. The lighting is bright and natural, coming from the upper left, casting a gentle shadow on her face.

“The Cabrillo library and a lot of the local coffee shops are overpopulated and very difficult to study in. There’s no question that students would find it helpful to have another option. This would also give the church a chance to cultivate an atmosphere for intentional conversations.”

*-Amanda Okamoto*



"When I think of a coffeehouse,  
I think of a village well; a  
simple place for thirst  
to be quenched where  
unexpected conversations  
happen. A coffeehouse  
near a college and church  
campus would be a subtle  
place to demonstrate the  
character of Jesus, and  
an encouraging space to  
listen."

*-Marc Opena*





# PHASE 02

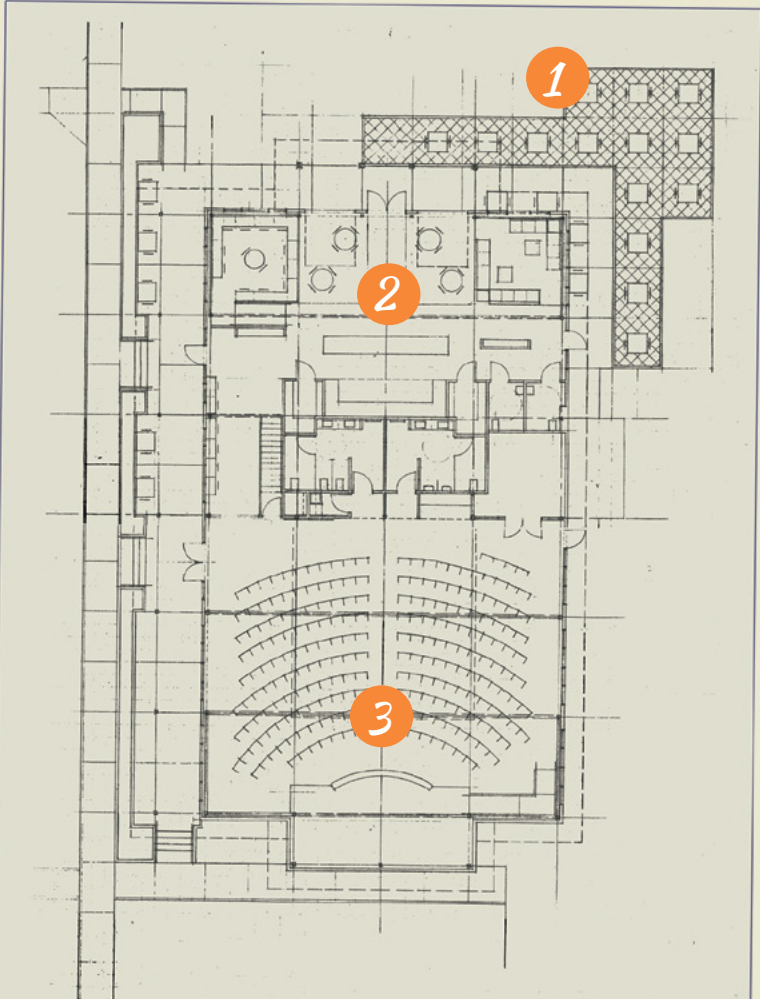
## COLLEGE MINISTRY CENTER & COFFEEHOUSE

- Near Cabrillo College entrance of church parking lot
- Coffeehouse for huge student population next door, for parents of preschool and grade school students, and for broader community, bringing new people to campus
- Large multipurpose space for meetings, Bible studies, concerts, art displays, and more

**1** *Outdoor patio space*

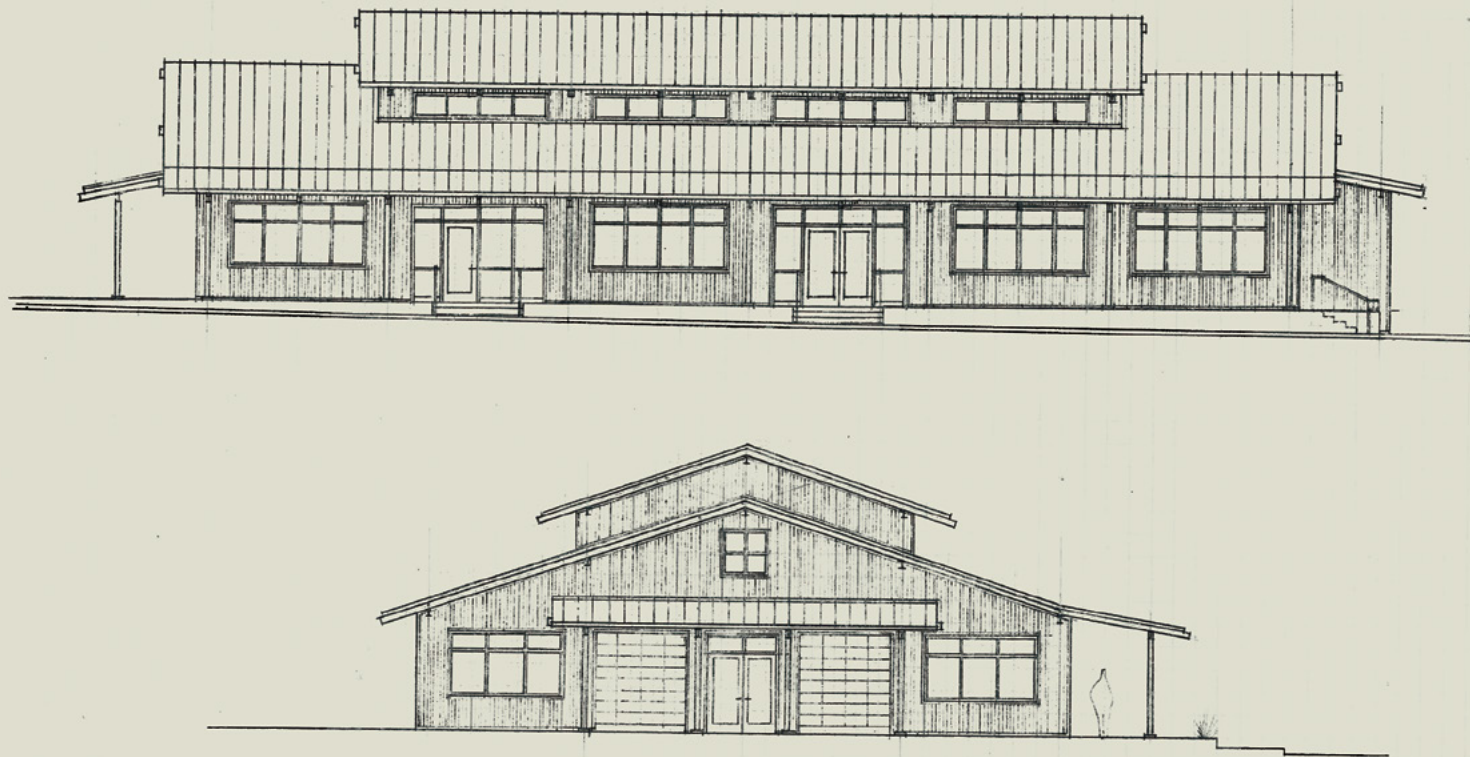
**2** *Indoor seating for 75*

**3** *225 person meeting space*



*College Ministry Center/Coffeehouse Floorplan*





*College Ministry Center/Coffeehouse Elevation*





*Second Harvest Food Bank*



*New Church in Melito, Italy*

# ◀ COMPASSION FIRST

---

The **first** funds raised will go to maintain our commitment to outreaches like Second Harvest Food Bank and our missionaries.

**Second Harvest Food Bank**                      \$200,000

The food bank provides fresh and non-perishable food for over 80 local food pantries and shelters, most operated by churches and faith-based agencies. Our gift will purchase one million pounds of food!

**New Church in Melito, Italy**                      \$100,000

This neighborhood near Naples is known for violent crime and gangs. With our gift the church there will be able to continue transforming a three-story office building into ministry space for thousands.

*NO MATTER HOW MUCH WE RAISE FOR OUR OWN BUILDING, THE FIRST FUNDS WILL GO TO THESE PROJECTS.*

# CAMP UPGRADES

One of our most effective ministries to kids and young adults is Camp Hammer, our conference center surrounded by the world-class beauty of Big Basin State Park

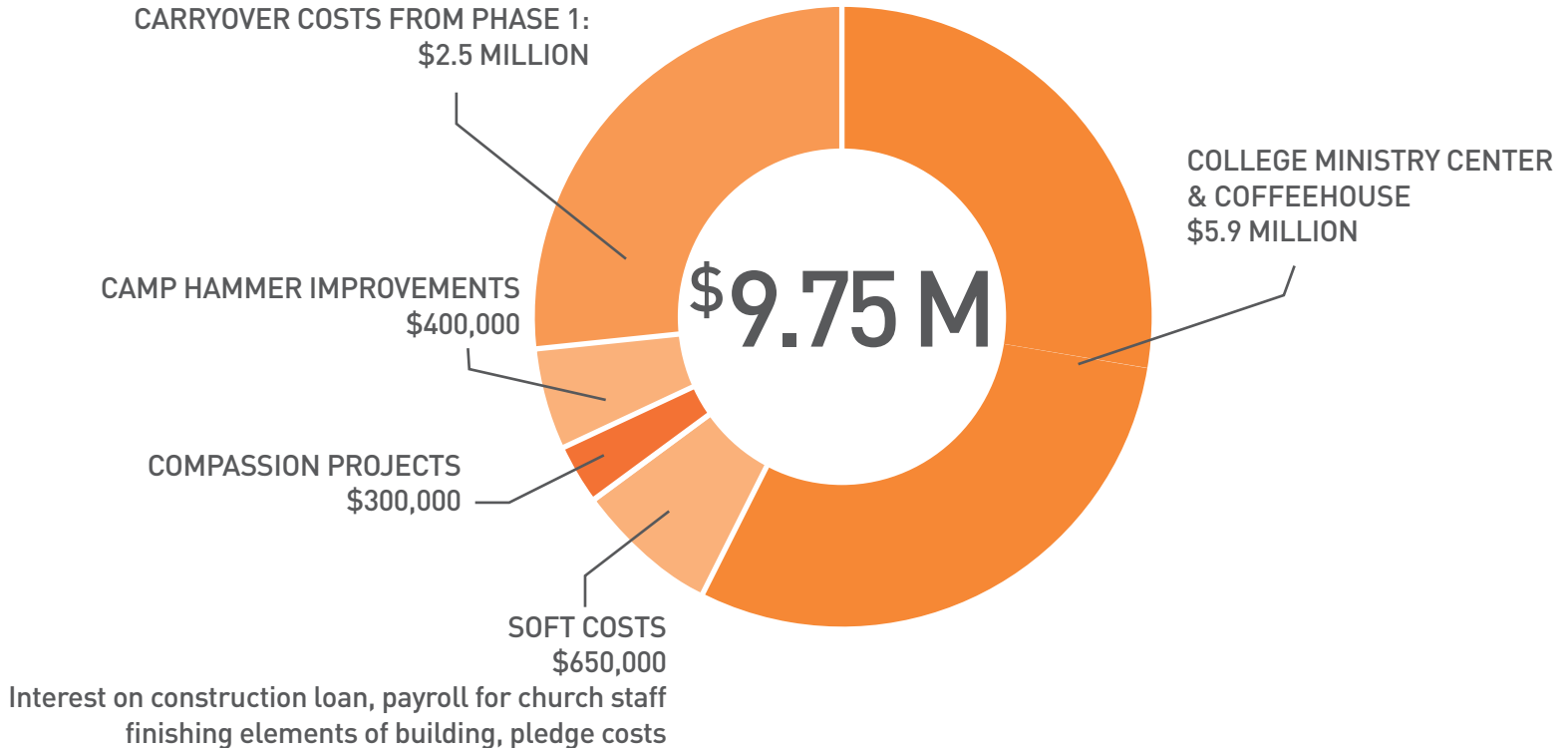
Camp Hammer will receive needed attention to infrastructure

- Roof repair and replacement
- Replacement of aging utility lines
- Updates to accommodations, including beds and cabin furnishings
- Increased water storage





# ESTIMATED COSTS



# F.A.Q.

---

## Frequently Asked Questions

### When will this happen?

Our Phase 2 campaign begins in October 2017 and concludes the weekend before Thanksgiving as we gather gifts and pledges for the next 4 years. The next weekend, November 25-26, we'll announce our totals! Please pray now about how you can participate. One note: If those currently giving continue their pledges through 2021, all these projects will be funded.

### What is our current financial situation?

Twin Lakes Church has a balanced budget and general church giving has grown to record levels during the same years the congregation has been giving to our 2020 Vision. Depending on the level of Phase 1 pledge fulfillment our carryover cost from the new children's building will range from \$4-5M. Our goal is to reduce this by \$2.5 million in Phase 2.

We anticipate that school and coffee house income, plus estate gifts, will be able to pay the remaining costs. Thereafter, these sources of income will be used to fund church ministries.

## Why are there still costs associated with the new children's building?

Three reasons: As with many construction projects, there were additional unanticipated costs. Also there are financing costs that continue to accrue since starting construction in 2014. Plus, we covered the majority of soft costs and governmental fees for all three buildings in Phase 1.

## Why has the initial scope of Phase 2 changed?

The cost for Phase 2 has risen considerably since we first received estimates for the two buildings we had hoped to build next: Kraft Chapel and the College Ministry Center/Coffee House. Due to marketplace factors beyond our control, including labor and material cost spikes tied to the enormous construction projects now underway in the Silicon Valley, the estimates for the construction were far beyond original proposals. The church board and project leadership decided it would be wise to only build what we believe we can afford at this time. The least expensive of the two buildings is the college ministry center.

## Why build the college ministry building first?

While it's less expensive than the chapel, the board felt the college ministry center also has the most immediate potential impact of the two buildings as an outreach to the community. In addition, the coffee house portion of the building provides a source of income, giving us a continuing way to help pay for construction and ongoing staffing and maintenance.



### **Why are we adding a coffeehouse?**

Hundreds of Cabrillo students use our lot every day. By providing the right environment and quality products the coffeehouse promises to be a magnet for students, Cabrillo theater goers, spectators at weekend athletic events, CEC/TLCS parents, church attenders, and the whole Aptos community!

### **What will the college center & coffeehouse be like?**

The building will have a modern, industrial loft design. The outside will include metal siding, roofs and steel beams similar to the children's building—but in its own distinct way. The college ministry side (about 65% of the overall space) will allow for worship gatherings and programs for up to 225 people. We're currently consulting with Verve on the coffeehouse layout.

### **Will the coffeehouse be open to the public?**

Yes, as much as possible!

### **How will we staff the coffeehouse?**

Just as in our current coffee stand, "Higher Grounds", we will pay some staff and also develop a volunteer team. Experts at Verve have agreed help us with staff training and other aspects of the operation.

### **Is there a plan to add solar power?**

Our goal is to install shaded parking canopies topped with solar panels—lowering our carbon footprint and energy costs! We're seeking funding from interested donors.

### **Will the coffeehouse be a “for profit” business?**

TLC is a non-profit religious organization. The coffeehouse will operate like our schools and camps. After covering operating costs, surplus income will be used to pay off any remaining 2020 Vision expenses. Thereafter, the income will be used to support TLC ministries.

### **Does this mean the chapel will not be built?**

The change in Phase 2 does not mean the chapel is permanently shelved. We’re just delaying the completion of part of the master plan until it’s financially feasible to continue.

### **What if we don’t achieve our goal?**

We would view that as God’s leading to modify or suspend Phase 2.

### **What if we receive enough for both buildings?**

We would rejoice in God’s provision. The construction estimate for the chapel is \$6.5 million.

### **How can we make this happen?**

As we said in Phase 1... we can’t! Only God can. But as we have a “whatever it takes” attitude for His kingdom, He can work through all of us to do miracles!



*Aerial shot of Twin Lakes Church*

# ◀ IMPORTANT DATES

---

## **October 21/22**

2020 Vision Phase 2 pledge drive begins

## **November 5**

Info meeting after Sunday 10:45am service

## **November 11**

Info meeting after Saturday 6pm service

## **November 18/19 — COMMITMENT WEEKEND**

Bring your complete pledge card and any one-time contributions.

## **November 25/26 — CELEBRATION WEEKEND**

We'll rejoice in what God has given!





You are good good oh  
You are good good oh  
You are good good oh  
You are good good oh

*...NOW TO HIM WHO IS ABLE TO DO IMMEASURABLY  
MORE THAN ALL WE ASK OR IMAGINE, ACCORDING  
TO HIS POWER THAT IS AT WORK WITHIN US...*

*EPHESIANS 3:20*



[WWW.TLC.ORG](http://WWW.TLC.ORG)

*Printing donated by Mission Printers*